

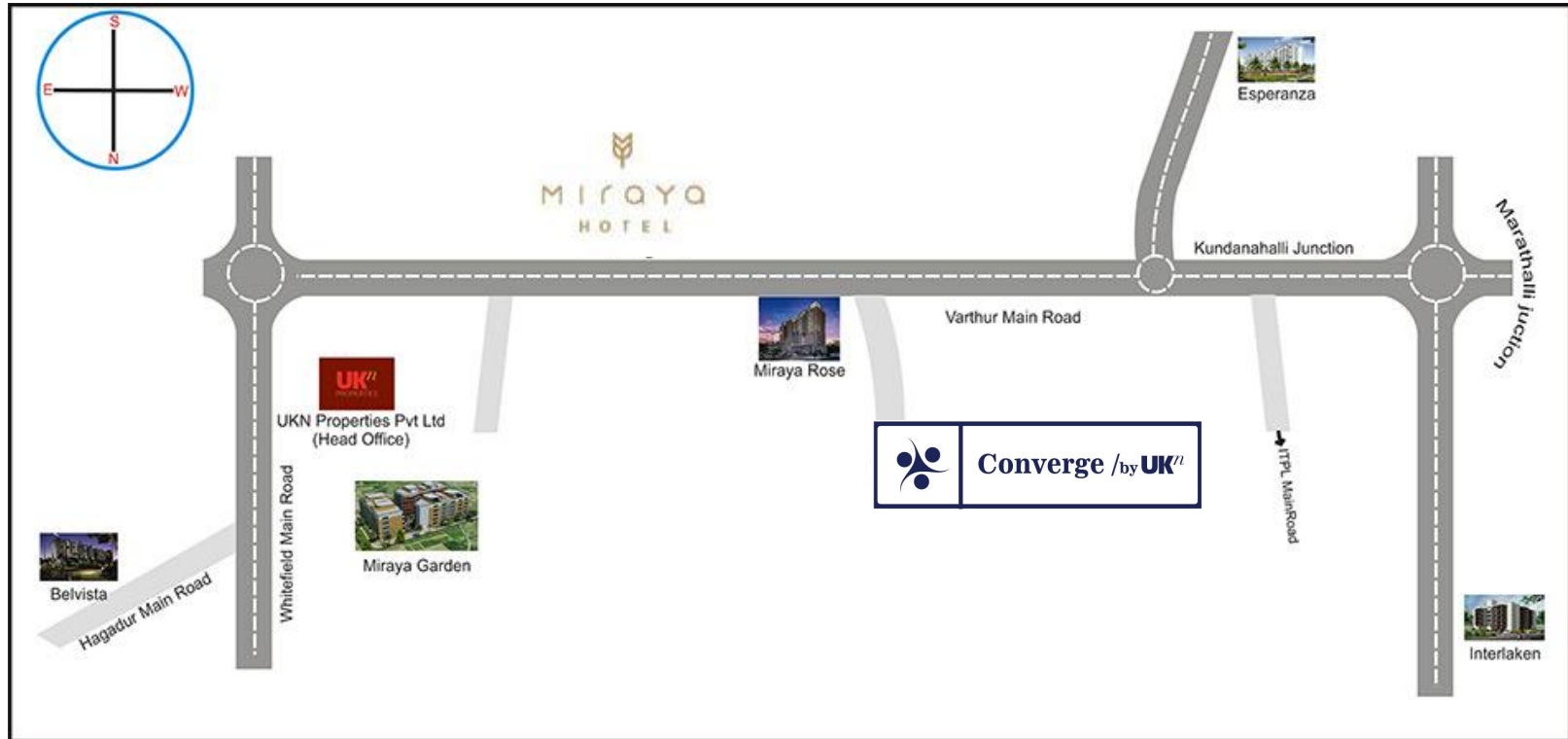


NALLURHALLI MAIN ROAD , WHITEFIELD, BANGALORE





## LOCATION



- Google Map Link: <https://goo.gl/maps/aqkjWxBUALT2>
- 2.5 kms from proposed Vydehi Metro station
- 0.5 km from Shell petrol station on Varthur Main Road



## LOCATION

- Converge by UKn is a premium commercial building set on the strategic Nallurhalli main road with easy access to EPIP, Whitefield Main Road and ITPL.
- Located just 2kms from EPIP, Whitefield Business Hub and the proposed Vydehi Metro station, Converge is a commercial delight for boutique office space.

Distance/Time to Converge		
Destination	Time	Distance
ITPL (SAP, SGR Tech)	15 mins	3.1 Km
Indira nagar	40 mins	12.1 Km
Outer Ring Road	20 mins	6.6 Km



## PROJECT BRIEF

- With its brick and steel façade detailing, the glass building offers enormous light inside this timeless building which borrows aspects of mid-century to modern architecture.
- The high ratio between the floors gives a sense of open spaces which is ideal for office ambience.
- Converge by UKn is ideal for small to medium businesses, start-ups and co-working spaces.
- Efficient plans and good visibility makes this building one to look out for.



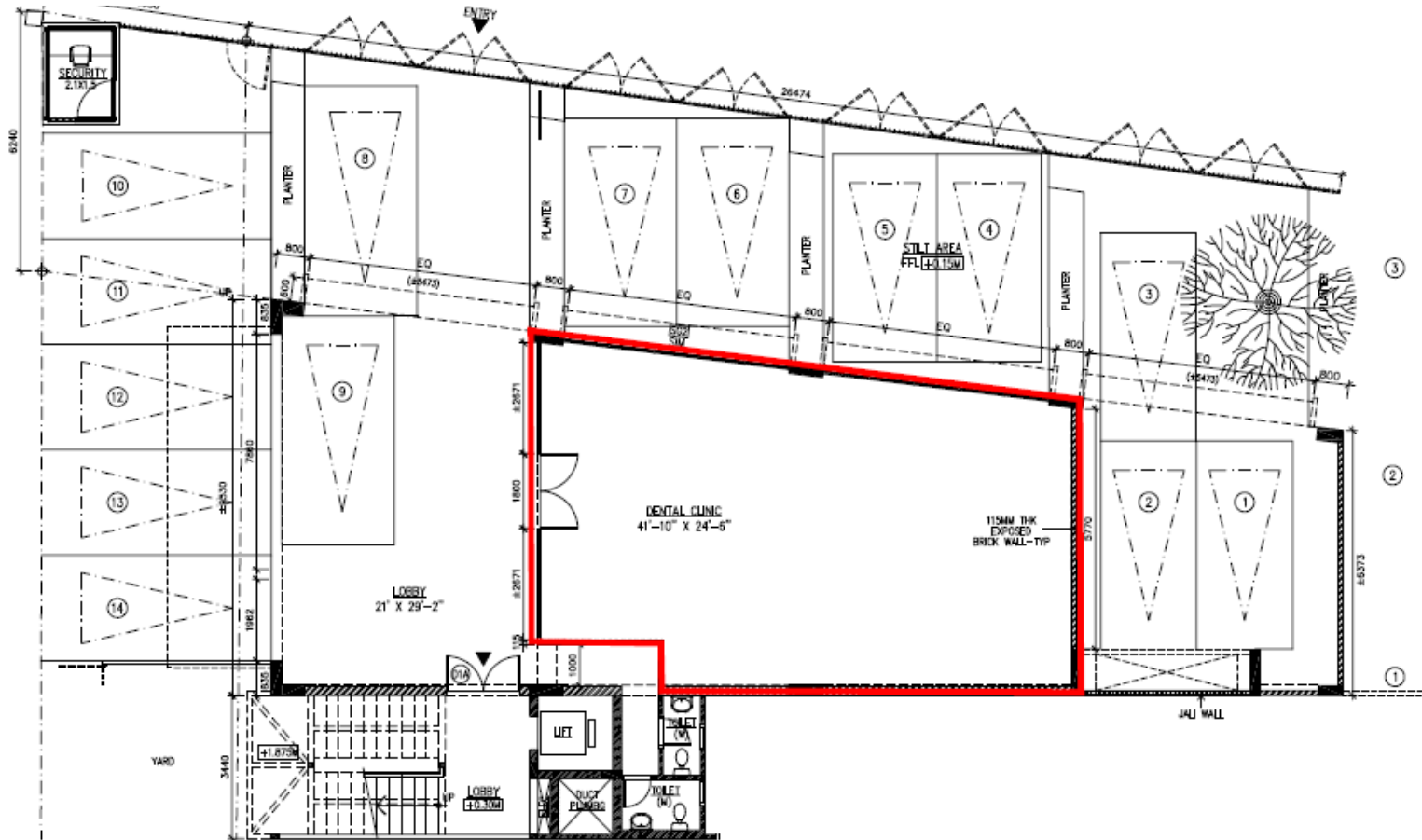
## PROJECT BRIEF

- Commercial Area – 13,700 Sq. Ft.
- Number of Floors – G+3+terrace
- Parking Capacity – 15 Car parks
- Floor -Floor Height – 3.45 meters (typical)

<u>Floor</u>	<u>SBA (Sq. Ft.)</u>
Ground	1500
First	3400
Second	3400
Third	3400
Terrace	2000
<b>Total</b>	<b>13,700</b>



# GROUND FLOOR PLAN









@ a Glance









# Actual site pictures





# VYEDEHI METRO STATION WORK IN PROGRESS





# 8 About UKn



Inspired by a philosophy of dynamic forms and strong expressiveness, UKn creates properties that are monumental, yet grounded in an understanding of human contexts and deep engagement with contemporary materials and techniques.

In the past decade, we've applied these principles to create Commercial, Retail, Residential and Hospitality Buildings that are aesthetically uplifting as well as supremely functional and, ultimately, humane.

Our team is experienced, enthusiastic and committed to working with you to create structures that serve human needs, while elevating human experience. To paraphrase the American architect and visionary Louis Kahn, we begin with the immeasurable and use measurable means to create something that, in the end, must be immeasurable - *Investing in Infinity*.